



Snowland Journeys

**UNIQUE
EXPERIENCES
EMPOWERING
LIVES**

MUTUALLY BENEFICIAL PARTNERSHIPS

By partnering with us, you will:

- Effect social change
- Create local and global impact
- Infuse purpose into your culture*
Support radical innovation*
Improve employee wellbeing
- Enable team reconnection
- Create deeper connection with customers
- Support the UN Sustainable Development Goals

Snowland Journeys offers well defined, high impact projects for purpose-driven businesses.

Connecting employees with social impact / CSR initiatives they truly believe in and that can genuinely make a difference.





**THE MOUNTAIN VILLAGES OF NEPAL'S NORTH-WEST HIMALAYA
ARE THE MOST REMOTE PLACE ON THE PLANET**



HIMALAYAN FAMILIES FACE AN IMPOSSIBLE CHOICE FOR THEIR CHILDREN

With Family but Without Education
or
Educated but Without Family



**MANY HIMALAYAN CHILDREN ARE SENT AWAY
FROM PARENTS AT AGE 4 FOR EDUCATION**

Without Help,
They Will Never See Their Family Again





**SNOWLAND JOURNEYS IS A NON-PROFIT ORGANISATION THAT ENABLES
REINTEGRATION OF YOUNG PEOPLE WITH THEIR FAMILIES**





**WE ALSO DEVELOP ENVIRONMENTAL INFRASTRUCTURE PROJECTS
AND SUSTAINABLE LIVELIHOODS IN COMMUNITIES
OF NEPAL'S HIGH HIMALAYAS**



BACKGROUND

The stories of the people we support
are featured in the
award-winning documentary film

Children of the Snow Land



BECOME A PARTNER

Snowland Journeys relies entirely on the generosity and commitment of our partners.

We'd like to partner with you for Social Impact / CSR support.

By supporting Snowland Journeys you will:

- Empower Himalayan children to reconnect with their families,
- Promote belonging to their mountain communities,
- Enable sustainable development and environmental infrastructure in remote villages of Nepal's High Himalayas.

PARTNER WITH US TO EXTEND A LIFELINE TO THE MOST DETACHED CHILDREN AND COMMUNITIES ON EARTH



JOIN US

Bespoke partnerships with Snowland Journeys can include:

- Support Impactful Projects,
- Claim tax relief on your donations via Gift Aid,
- Meaningful Volunteering Opportunities,
- Encourage employee teams to join our Virtual Trekking Challenges,
- Reward high performing employees with our Outdoor Weekends in the UK,
- Send teams for leadership and development on our Himalayan Expeditions,
- Host a fundraising film screening of 'Children of the Snow Land'.



OUR PATRON

Joanne Lumley
OBE, FRGS

By Joanna has graciously agreed to become Patron of Snowland Journeys. She has a long association and interest in Nepal and its people inspired by her father's service as an officer in 6th Gurkha Rifles.

“ I went to boarding school; but I was eight, and I came home for the holidays and therefore was with my family as I turned from being a little child into a teenager. Imagine not seeing your parents and home for 12 years! The remote mountain villages in Nepal are notoriously difficult to get to; and yet imagine the black and white choice between home life or being educated miles away. ”

Joanne Lumley



WHO WE ARE

The directors of Snowland Journeys CIC (Community Interest Company) are

Zara Balfour FRGS (director/producer of 'Children of the Snow Land') and Phil Briggs FRGS.

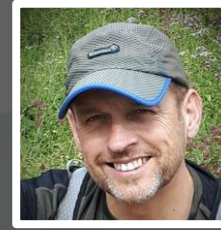
Our Nepalese partners include the founder of Snowland School, known as the 'Dolpo Buddha', school manager Pema Gurung.

Our operations and expedition team Ram Sundar Thapa and Kumar Lama, and reintegration expert Tsewang Norbu Lama.

Also our graduate trainees Nima Gurung, Zin Pa, Tsering Diki Lama and Jeewan Mahatara.



ZARA BALFOUR, FRGS
CEO



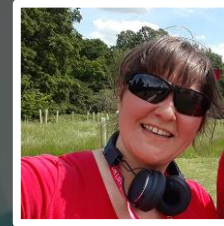
PHIL BRIGGS, FRGS
DIRECTOR OF
OPERATIONS



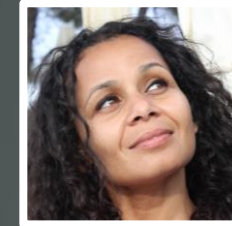
BOO STONE
RELATIONSHIPS
MANAGER



FRANZISKA THOMAS
FUNDRAISING
MANAGER



MICAELA BLITZ
MARKETING
MANAGER



CONSUELA MCKENZIE
MARKETING
CONSULTANT



PAUL ZABIHI
LEAD DIGITAL
DESIGNER UX/UI



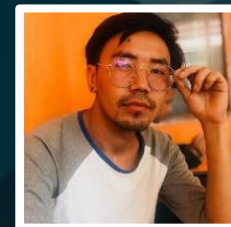
RAM SUNDAR THAPA
NEPAL OPERATIONS
MANAGER



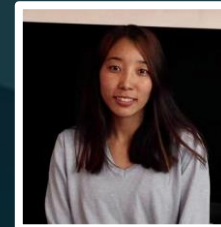
KUMAR LAMA
EXPEDITION GUIDE



NIMA GURUNG
GRADUATE TRAINEE
GUIDE



ZIN PA
GRADUATE



TSERING DIKI
GRADUATE



JEEWAN MAHATARA
GRADUATE TRAINEE
GUIDE



CONTACT

Thank you.

Please get in touch to discuss further:

Boo Stone

boo@snowlandjourneys.com

Phil Briggs

phil@snowlandjourneys.com

Zara Balfour

zara@snowlandjourneys.com

www.snowlandjourneys.com

